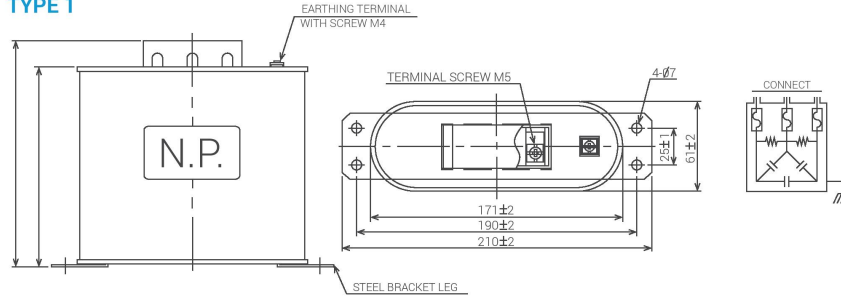
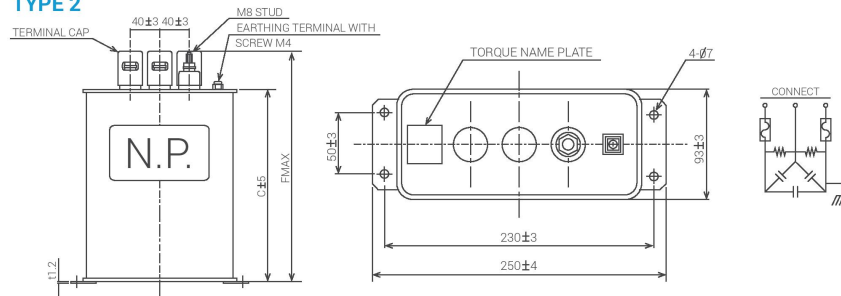


TYPE 1



TYPE 2



RATING & DIMENSIONS (mm.)

NO.	CODE NO.	RATED			DIMENSION (mm.)		GROSS MASS	TYPE
		VOLTAGE	CAP	CURRENT	C	F		
1	RFT41550C1EX	415 V	5 kvar	6.95A	150	170	1.4 kg.	1
2	RFT41575C1EX		7.5 kvar	10.43A	150	170	1.4 kg.	
3	RFT41510D1EX		10 kvar	13.91A	150	170	1.4 kg.	
4	RFT41513D1EX		12.5 kvar	17.39A	210	230	2.0 kg.	
5	RFT41515D1EX		15 kvar	20.86A	210	230	2.0 kg.	
6	RFT41520D1EX		20 kvar	27.82A	250	270	2.4 kg.	
7	RFT41525D1EX		25 kvar	34.78A	250	270	2.4 kg.	
8	RFT41530D1EX		30 kvar	41.70A	240	290	6.0 kg.	
9	RFT41540D1EX		40 kvar	55.60A	300	350	7.0 kg.	
10	RFT41550D1EX		50 kvar	69.90A	350	400	8.0 kg.	
11	RFT44050D1EX	440 V	5 kvar	6.6A	150	170	1.4 kg.	1
2	RFT44075C1EX		7.5 kvar	9.8A	150	170	1.4 kg.	
3	RFT44010D1EX		10 kvar	13.1A	150	170	1.4 kg.	
4	RFT44013D1EX		12.5 kvar	16.4A	210	230	2.0 kg.	
5	RFT44015D1EX		15 kvar	19.7A	210	230	2.0 kg.	
6	RFT44018D1EX		17.5 kvar	23.0A	250	270	2.4 kg.	
7	RFT44020D1EX		20 kvar	26.2A	250	270	2.4 kg.	
8	RFT44025D1EX		25 kvar	32.8A	250	270	2.4 kg.	
9	RFT44030D1EX		30 kvar	39.4A	240	290	6.0 kg.	
10	RFT44040D1EX		40 kvar	52.5A	300	350	7.0 kg.	
11	RFT44050D1EX		50 kvar	66.6A	350	400	8.0 kg.	

NO.	CODE NO.	RATED			DIMENSION (mm.)		GROSS MASS	TYPE
		VOLTAGE	CAP	CURRENT	C	F		
1	RFT52550C1EX	525 V	5 kvar	5.5A	150	170	1.4 kg.	1
2	RFT52575C1EX		7.5 kvar	8.2A	150	170	1.4 kg.	
3	RFT52510D1EX		10 kvar	11.0A	150	170	1.4 kg.	
4	RFT52513D1EX		12.5 kvar	13.8A	210	230	2.0 kg.	
5	RFT52515D1EX		15 kvar	16.5A	210	230	2.0 kg.	
6	RFT52518D1EX		17.5 kvar	19.2A	210	230	2.4 kg.	
7	RFT52520D1EX		20 kvar	22.0A	250	270	2.4 kg.	
8	RFT52525D1EX		25 kvar	27.5A	250	270	2.4 kg.	
9	RFT52530D1EX		30 kvar	33.0A	240	290	6.0 kg.	
10	RFT52540D1EX		40 kvar	44.0A	300	350	7.0 kg.	
11	RFT52550D1EX	50 kvar	55.0A	350	400	8.0 kg.		

SHIZUKI ELECTRIC (THAILAND) CO.,LTD

Bang-Chan Industrial Estate No.111 Soi Serithai 54, A. Kannayao, Bangkok 10230 Thailand

Tel : (66)2919-9600 Fax : (66)2919-9953 Website : www.thai-shizuki.com E-mail : sales@thai-shizuki.com

LOW VOLTAGE POWER CAPACITOR

- Pressure sensitive interrupter safety device
- Rated Voltage : 415VAC, 440VAC, 525VAC
- Rated output in Kvar : 5 ~ 50 Kvar

APPLIED STANDARD

All capacitors are designed, manufactured and tested to meet the requirements of IEC 60831-1, 2

OPERATING CONDITIONS

Installation : Indoor
 Ambient temperature : -25°C to +45°C
 Altitude : Not exceeding 2000 meters above sea level

TYPE AND RATINGS

1. Type : RF-T
2. Rated voltage : see the table shown on page 4
3. Rated output in kvar : see the table shown on page 4
4. Rated frequency : 50 Hz
5. Phase and connection : Three (3) phase and delta



DESIGN AND CONSTRUCTION

1. The capacitor containers is coated with non-corrosive poly-urethane resin enamel in Munsell colour notation 5Y7/1 for extended maintenance free service life.
2. The capacitors are normally designed to suit for mounting in vertical position with protective cover terminals on top.
3. Capacitor type RF-3T are manufactured with specially processed metallized polypropylene film impregnated with wax, within at tin plate casing and hermetically sealed.

ELECTRICAL CHARACTERISTICS

1. **Discharge device :** The capacitors are provided with an internal discharge resistor which will reduce the residual voltage from the peak value to 75 volts or less within a maximum time of 3 minutes after they are disconnected from the source of supply.

SAFETY FEATURES

Capacitance (Output) : within +10% and -5%

Dielectric loss : shall be 0.2 watt/kvar (discharge resistors included)

Maximum permissible overloads/current : not exceeding 1.3 times of the rated current

Maximum permissible overloads/voltage : shown on below chart

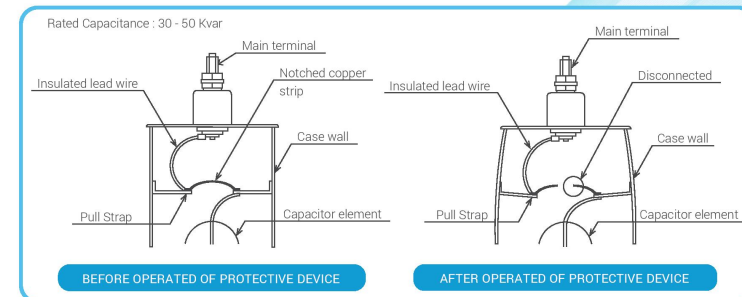
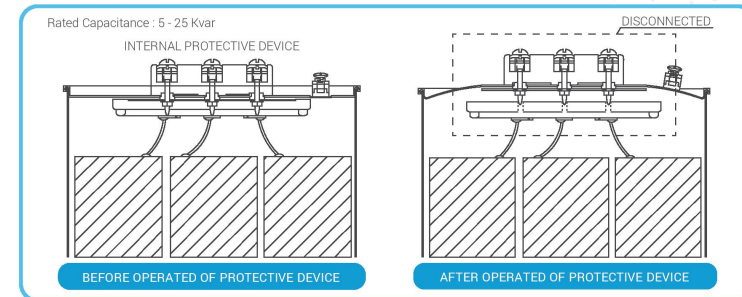
MAXIMUM PERMISSIBLE VOLTAGES VS DURATION

VOLTAGE FACTOR (X rated voltage)	MAXIMUM DURATION
1.10	8 hours max. in every 24 hours
1.15	30 minutes max. in every 24 hours
1.20	5 minutes max. x 2 times max. in a month
1.30	1 minutes max. x 2 times in a month

INTERNAL PROTECTIVE DEVICE

Should the internal pressure build-up resulting from continuous dielectric breakdown. In result, the sensitive pressure interrupter between the capacitor elements and terminal will, detach the capacitor from the electrical circuit.

INTERNAL PROTECTIVE DEVICE : RF-T



WARRANTY

Company warrants these capacitors against defects in materials and workmanship for One (1) full year from date of installation. Exception for capacitors on networks that are damage by harmonic, overvoltage, overcurrent and over ambient temperature refer to IEC No.60831-1

NOTE

We reserve the right to alter or modify the information contained herein at any time in the light of technical or other developments.

We do not accept any responsibility for any misuse of the product and cannot be held liable for indirect or consequential damages.